

KAI WS ATMS 2.0 Migration Manual

Table of Contents

1	OVERVIEW	3
1.1	Purpose	3
1.2	Target Group	3
1.3	Background	3
2	STEP-BY-STEP INSTRUCTIONS	4
2.1	Step 1: Verify that your KeyReader is connected to the KeyPool	4
2.2	Step 2: Switch from GKI to KAI WebService	4
2.3	Step 3: Verify that you can open a contract	5
2.4	Troubleshooting	5

1 Overview

1.1 Purpose

Explain the steps required to be able to continue performing Key Reads after the Key Reading interface is changed.

1.2 Target Group

Loaner Desk Staff, ISPI Admin, IT Manager

1.3 Background

BMW is changing the interface used for key interpretation from a de-central to a central infrastructure. This will leverage all the benefits provided by the Key Pool already introduced into all BMW dealerships in North America. Your dealership should have already received a communication regarding this change in late November.

As a result, the existing Key Read function in ATMS will stop working as of January 1st, 2020. ATMS (both 1.0 and 2.0) will use the new KAI WebService to access the Key Pool.

The KAI WebService will always provide ATMS with the latest physical Key Read for a specified VIN in your dealership. While Key Reads are stored in the Key Pool for 7 days, ATMS will only consider Key Reads within the last hour as valid. If a Key Read is older than an hour it will not be displayed and you have to read the Key again.

2 Step-by-Step Instructions

2.1 Step 1: Verify that your KeyReader is connected to the KeyPool

The KeyReader at your loaner desk should already be connected to the KeyPool.

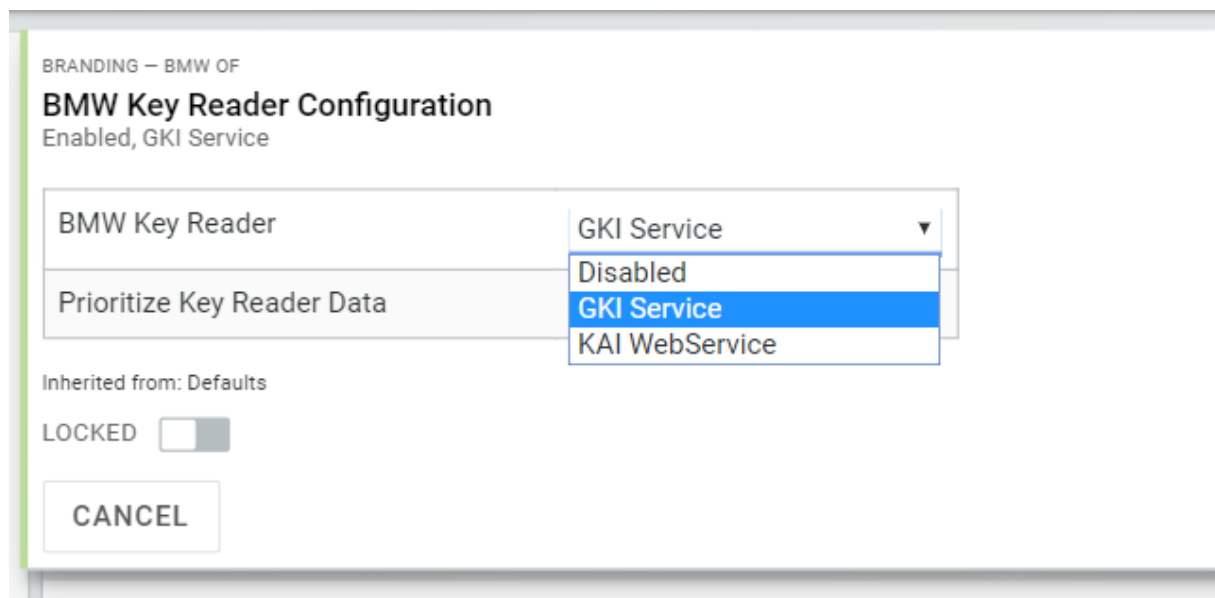
To verify this, please perform a KeyRead with any BMW key using the KeyReader at your loaner desk. Then, open ISPA Next on any PC in your dealership. The KeyRead should show up in the KeyPool.

If it doesn't please contact your ISPI Admin. On November 27th we have reminded all ISPI Admins to include the KeyReader at the loaner desk into the KeyPool, which also included detailed instructions.

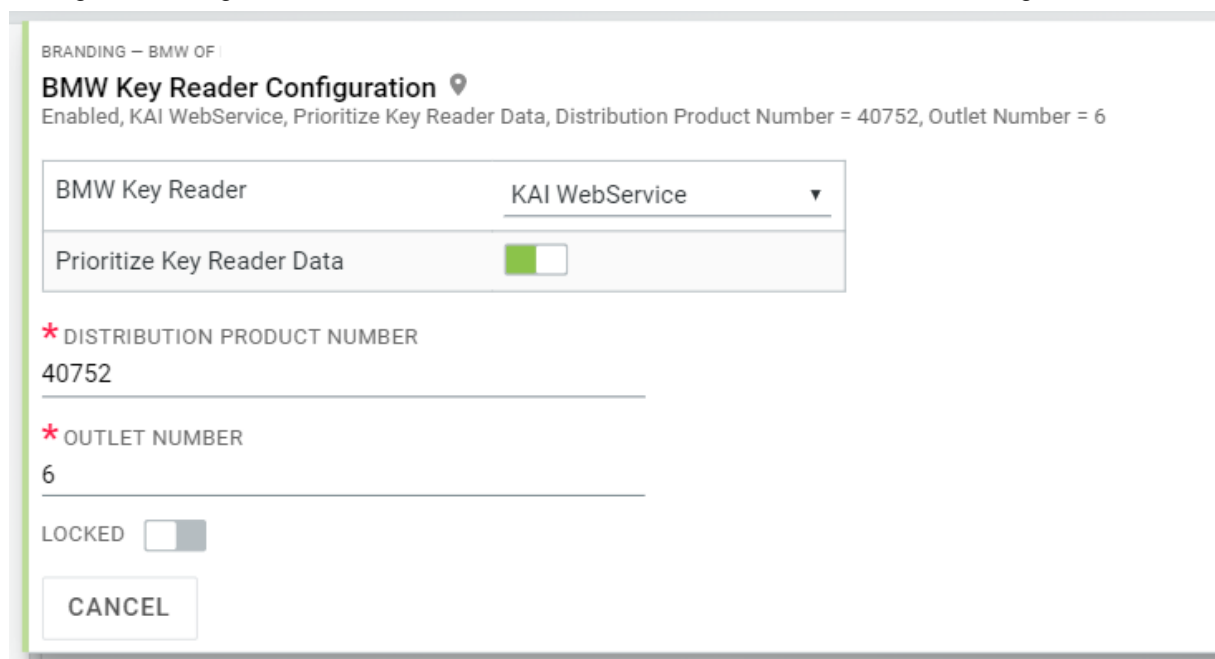
2.2 Step 2: Switch from GKI to KAI WebService

In ATMS 2.0 , go to Admin Setup (top-right corner) → Management Tab → Branding (checkbox on left).

The field "BMW KeyReader" should currently show "GKI WebService".

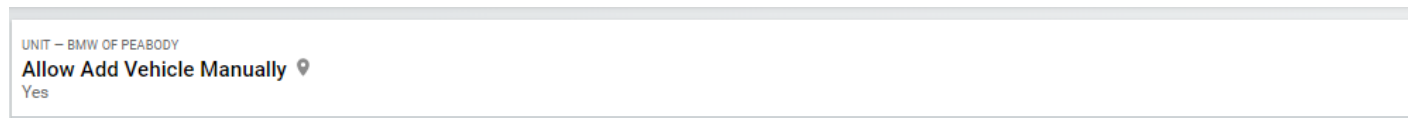


Change the setting to show "KAI WebService" and click "SAVE" to save the new configuration.



In ATMS 2.0 , change your checkbox on the left from Branding to Unit.

The field "Allow Add Vehicle Manually" should be changed from No to Yes and click "Save".

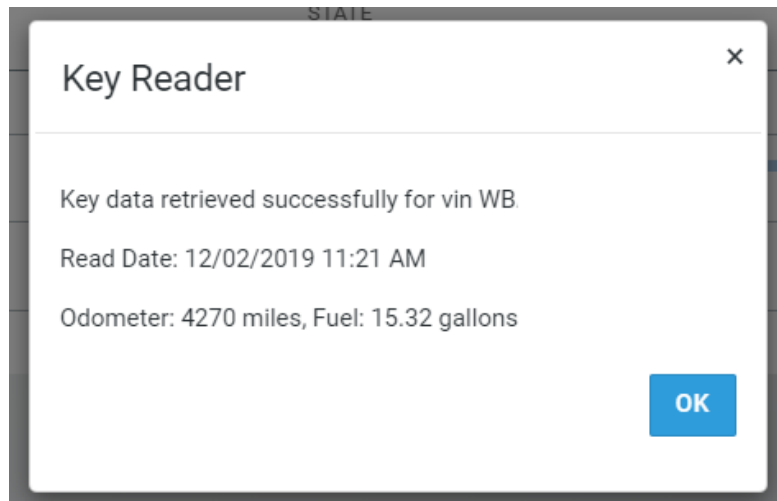


2.3 Step 3: Verify that you can open a contract

Read in key for one of your loaner vehicles.

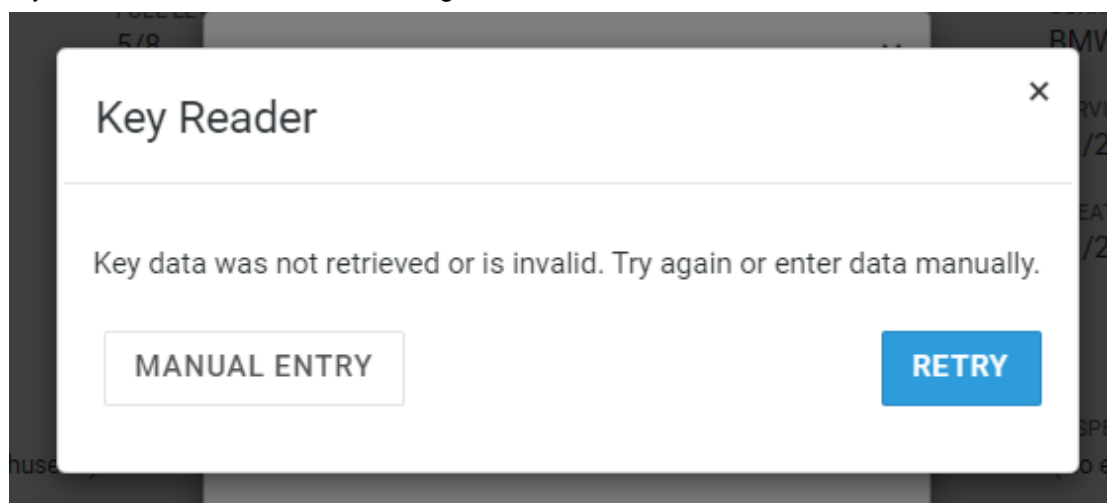
Open a contract for this vehicle.

You should see the following dialogue. This confirms that KAI WebService is configured correctly.



2.4 Troubleshooting

If you receive the below error message.



1. Verify that you are using the correct VIN.

2. Make sure that your KeyRead is not outdated. Remember that ATMS 2.0 only accepts KeyReads which are less than 1 hour old.
3. Verify that you can see the KeyRead in ISPA Next. If the KeyRead does not show up in ISPA Next, please contact your ISPI Admin.
4. If the KeyRead shows in ISPA Next, but not in ATMS 2.0, please contact your TSD support team.

You can always switch back to "GKI WebService" if "KAI WebService" does not immediately work. Please remember, that GKI WebService will stop working on January 1st, 2020. You have to complete the migration before then.

Summary:

If you have questions on step 2.1, you may direct them to your ISPA Admin who may reach out to BMW DCS's IT Help Desk at 800-877-8144.

Questions on the step 2.2, may be directed to TSD support via 978-296-6187 or support@tsdweb.com.